

Earn up to
1.6 CEUs

NESSLUP

NEW ENGLAND SYMPOSIUM FOR **SPEECH-LANGUAGE PROFESSIONALS**

Worcester, Massachusetts
October 19-21, 2017

Join colleagues from your state or neighboring states for this innovative continuing education event geared for speech-language professionals from Connecticut, Massachusetts, New Hampshire, Rhode Island and Vermont.

You can enjoy sessions from three different tracks, browse through the Exhibit Hall and participate in Roundtable discussions to share and learn from colleagues across the states. Attendees who are a member of their state Association (CSHA, MSHA, NHSLHA, RISHA and VSHA) will receive a special membership discount.

Hosted by:



Exhibit Hall

The Exhibit Hall will be open as follows:

Friday, October 20 7:30 am-5:00 pm
Saturday, October 21 7:30 am-12:30 pm

Sponsors

EBS Healthcare – Praxis Bowl
SDX Dysphagia Experts – Attendee Badges
Constant Therapy – Attendee Bags
The PROMPT Institute – Attendee Lanyards

Exhibitors to date

CBS Therapy, Constant Therapy, EBS Healthcare, Futures Education, LLC, Lingraphica, Reading With TLC, Saltillo Corporation, SDX Dysphagia Experts, Super Duper Publications, Teddy Talker by Creative Speech Products, The PROMPT Institute, TIMS Medical by Foresight Imaging, WPS

Please be sure to check the NESSLP website, nesslp.craven.management for the most up-to-date listing of exhibitors.

Praxis Bowl

Join in on the fun of the Praxis Bowl, being hosted by EBS Healthcare

Friday, October 20
5:00 pm - 6:30 pm



New England universities will form teams and compete for the coveted Praxis exam reimbursement for each team member along with bragging rights for winning the first NESSLP Praxis Bowl.

Wear your university colors and come ready to cheer on your team to victory.

Teams are comprised of four members and one alternate. If your team wins, all five members will receive Praxis exam reimbursement.

Contact Dawn Klinefelter at dklinefelter@robertcraven.com if your university is interested in forming a team, by **September 20, 2017**.

The Praxis Bowl will kick off the Student Track of the Symposium which will take place on Saturday.

Thanks to EBS Healthcare for hosting this event. *Please be sure to check the NESSLP website, nesslp.craven.management for the most up-to-date information regarding the Praxis Bowl.*



Location Information

DCU Center is the site of NESSLP
50 Foster Street
Worcester, MA 01608
508-755-6800

The following hotels are offering group rates to NESSLP attendees until September 27, 2017, or until the room blocks are sold out, whichever occurs first. **Please make your reservations early.**

Hilton Garden Inn

35 Major Taylor Boulevard (35 Worcester Center Blvd for GPS)
Worcester, MA 01606
508-753-5700
\$159 per night
Distance from DCU - Next door to DCU Center

Courtyard Marriott

72 Grove Street
Worcester, MA 01605
508-363-0300
\$159 per night
Distance from DCU - Less than one mile from DCU Center. Shuttle is available.

Hampton Inn and Suites

65 Prescott Street
Worcester, MA, 01605
508-886-9005
\$154/night
Distance from DCU - Less than one mile) from DCU Center. Shuttle is available.

Holiday Inn Express Worcester Downtown

110 Summer Street
Worcester, MA 01608
\$154/night
Distance from DCU - Two blocks from DCU Center

Continuing Education



The Speech-Language-Hearing Association of Virginia is approved by the Continuing Education Board of the American Speech-Language-Hearing Association (ASHA) to provide continuing education activities in speech-language pathology and audiology. **See course information for number of ASHA CEUs, instructional level and content area.** ASHA CE Provider approval does not imply endorsement of course content, specific products or clinical procedures.

This program is offered for up to **1.6 CEUs** (Various levels; Professional area).

Full speaker disclosures can be found on the NESSLP website at nesslp.craven.management.

NESSLP Schedule At A Glance

Thursday, October 19

- 7:00 pm-8:00 pm **MI** Roundtable Discussions
- 8:15 pm-9:15 pm **MI** *Advocating for the Professions and Yourself*, Susan Adams, JD

Friday, October 20

- 7:30 am-5:00 pm Exhibit Hall Open
- 8:00 am-9:30 am **MI** *Stretch Your Knowledge of Telepractice: Service Delivery, Regulation, Reimbursement*, Susan Adams, JD
- 8:00 am-11:30 am **M** *What Are We Actually Doing in Therapy for Cognitive and Communication Disorders?*, Lyn Turkstra, PhD, CCC-SLP, BC-ANCCS
- S** *Writing Instruction and Intervention: Strategies for SLPs*, Bonnie Singer, PhD, CCC-SLP
- M** *Decision Making and Ethical Practice: Lessons From End of Life*, Paula Leslie, PhD, FRCSLT, CCC-SLP
- S** *Introductory Training in Lively Letters for Phonemic Awareness, Phonics and Speech Production*, Nancy Telian, MS, CCC-SLP and Penny Castagnozzi, BA
- 10:00 am-11:30 am **MI** *Do States Have a Role in Health Reform? Habilitation Advocacy in Vermont*, Linda Hazard, EdD, CCC-A
- 11:45 am-1:00 pm **MI** Luncheon – *My History of Stuttering*, Featuring Leon Siros – .1 CEU available.
The Importance of Congress Re-Authorizing the Early Hearing Detection and Intervention (EHDI) Bill, Linda Hazard, EdD, CCC-A
Pre-registration for the luncheon is required. Please see the registration form for pricing.
- 1:15 pm-2:45 pm **MI** *Children Living in Poverty: Evidence Based Assessment and Intervention Strategies*, Elise Davis McFarland, PhD, CCC-SLP
- 1:15 pm-4:30 pm **M** *Beyond Simple Narratives: How to Describe Swallowing and Voice Treatments*, Jarrad Van Stan, PhD, CCC-SLP
- S** **Encore Presentation - Writing Instruction and Intervention: Strategies for SLPs**, Bonnie Singer, PhD, CCC-SLP
- M** *The Word Escapes Me: Voices of Aphasia*, Ellayne Ganzfried, MS, CCC-SLP; Mona Greenfield, PhD, CCC-SLP, LCSW; Caroline Knight, BA; Avi Golden; Yvonne Honigsberg
- S** *Integrated Interventions: Maximize Instruction While Simultaneously Targeting Speech, Language and Literacy*, Marianne Nice, MS, CCC-SLP
- 3:00 pm-4:30 pm **MI** *Ethics for School SLPs and CFY Supervisors*, Elise Davis McFarland, PhD, CCC-SLP
- 5:00 pm-6:30 pm **MI** Praxis Bowl – Hosted by EBS Healthcare

Saturday, October 21

- 7:30 am-12:30 pm Exhibit Hall Open
- 8:00 am-9:30 am **MI** Student Technical Sessions (running every half hour)
- 8:00 am-11:30 am **M** *How Can Technology Enable Rehabilitation in Chronic Aphasia?*, Lisa Haynes, MS, CCC-SLP and Swathi Kiran, PhD, CCC-SLP
- S** *Facilitating First Words and Word Combinations: Practical Strategies That Work!*, Lesley Maxwell, MS, CCC-SLP
- M** **Encore Presentation - The Word Escapes Me: Voices of Aphasia**, Ellayne Ganzfried, MS, CCC-SLP; Mona Greenfield, PhD, CCC-SLP, LCSW; Caroline Knight, BA; Avi Golden; Yvonne Honigsberg
- S** **Encore Presentation - Introductory Training in Lively Letters for Phonemic Awareness, Phonics and Speech Production**, Nancy Telian, MS, CCC-SLP and Penny Castagnozzi, BA
- 9:45 am-10:15 am **MI** *Meet With ASHA's President-Elect*, Elise McFarland, PhD, CCC-SLP
- 10:30 am-11:30 am **MI** *Embarking on Your Career: Understanding Issues Impacting the Professions*, Susan Adams, JD
- 11:30 am-12:45 pm Lunch On Your Own
- 12:45 pm-2:15 pm **M** *Harmonizing Together: An Overview of PPA and the Importance of Music Therapy*, Kathleen Howland, PhD, CCC-SLP and Megan Quimby, MS, CCC-SLP
- 12:45 pm-3:45 pm **MI** Student Technical Sessions (running every half hour)
- 12:45 pm-4:00 pm **M** *Taking the 'OMG' out of AAC*, Kim Winter, MA, CCC-SLP
- S** *Outside the Box Applications for SLPs: Integrating Technology in Interventions*, Sean Sweeney, MS, MEd, CCC-SLP
- S** *Persistent Speech Sound Disorders: Cognitive Implications for Assessment and Treatment*, Kelly Farquharson, PhD, CCC-SLP
- 2:30 pm-4:00 pm **M** *White Matter Matters: Let's Sing About It*, Kathleen Howland, PhD, CCC-SLP

Program Key:



Program and speakers are subject to change. **You may move freely between tracks.**

Abstracts and learner outcomes for all sessions can be found on the NESSLP website at nesslp.craven.management

School Track Presenters



Penny Castagnozzi, BA



Kelly Farquharson,
PhD, CCC-SLP



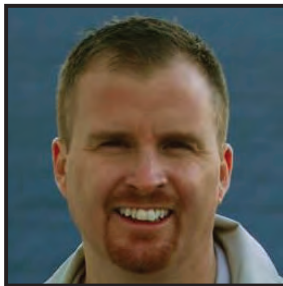
Lesley Maxwell, MS, CCC-SLP



Marianne Nice, MS, CCC-SLP



Bonnie Singer, PhD, CCC-SLP



Sean Sweeney,
MS, MEd, CCC-SLP



Nancy Telian, MS, CCC-SLP

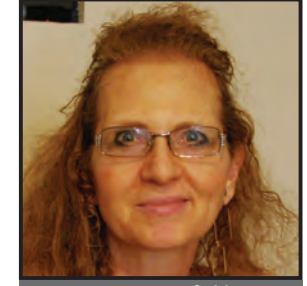
Medical Track Presenters



Ellayne Ganzfried, MS, CCC-SLP



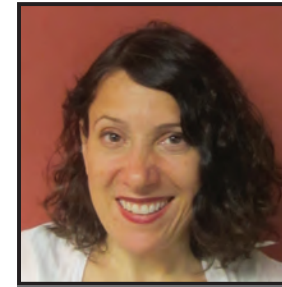
Avi Golden



Mona Greenfield,
PhD, CCC-SLP, LCSW



Lisa Haynes



Yvonne Honigsberg



Kathleen Howland, PhD, CCC-SLP



Swathi Kiran, PhD, CCC-SLP



Caroline Knight, BS



Paula Leslie,
PhD, FRCSLT, CCC-SLP

Multi-Interest Track Presenters



Susan Adams, JD



Elise Davis-McFarland,
PhD, CCC-SLP



Megan Quimby, MS, CCC-SLP



Lyn Turkstra, PhD, CCC-SLP,
BC-ANCDS



Linda Hazard, EdD, CCC-A



Leon "Jigger" Sirois



Jarrad Van Stan, PhD, CCC-SLP



Kim Winter, MA, CCC-SLP

